

Identifying soldierflies and allies: *Nemotelus* soldierflies

Compiled by Martin C. Harvey for the Soldierflies and Allies Recording Scheme

Version 2 at 11 February 2020

These guides are only possible thanks to the generosity of the brilliant photographers who have allowed their images to be used. Special mention must be given to Malcolm Storey and Steven Falk, whose photo collections form the backbone for most of the species guides:

Malcolm Storey's [BioImages website](#) – Steven Falk's [photo collections on Flickr](#)

Other photographers included in this guide are Bj.schoenmakers, Janet Graham, Nigel Jones, Paul Kitchener and Tony Davis. Thanks also to Simon Knott for pointing out some additional identification features.

Males are shown first, one page for each species, then females. The pages for males include distribution maps taken from the recording scheme's [provisional atlas](#) (Harvey 2017).

As far as possible, these guides show features that can be seen on live insects in the field, or are likely to be visible in photographs. For comprehensive identification keys and species accounts see [British soldierflies and their allies](#), by Alan Stubbs and Martin Drake. See also the recording scheme's [additional notes](#) to accompany the Stubbs and Drake keys.

For lots more information on soldierflies and allies go to the recording scheme [website](#), [Twitter](#) page or [Facebook](#) group.

For lots more information and events, and to support the study and conservation of flies, please consider joining [Dipterists Forum](#).

Records wanted!

Once you have identified your fly, please let the recording scheme have the details! Add to [iRecord](#) or send to the [recording scheme](#) so that we can share the records for conservation and research.

The Soldierflies and Allies Recording Scheme is part of Dipterists Forum



The Soldierflies and Allies Recording Scheme is supported by the UKCEH Biological Records Centre

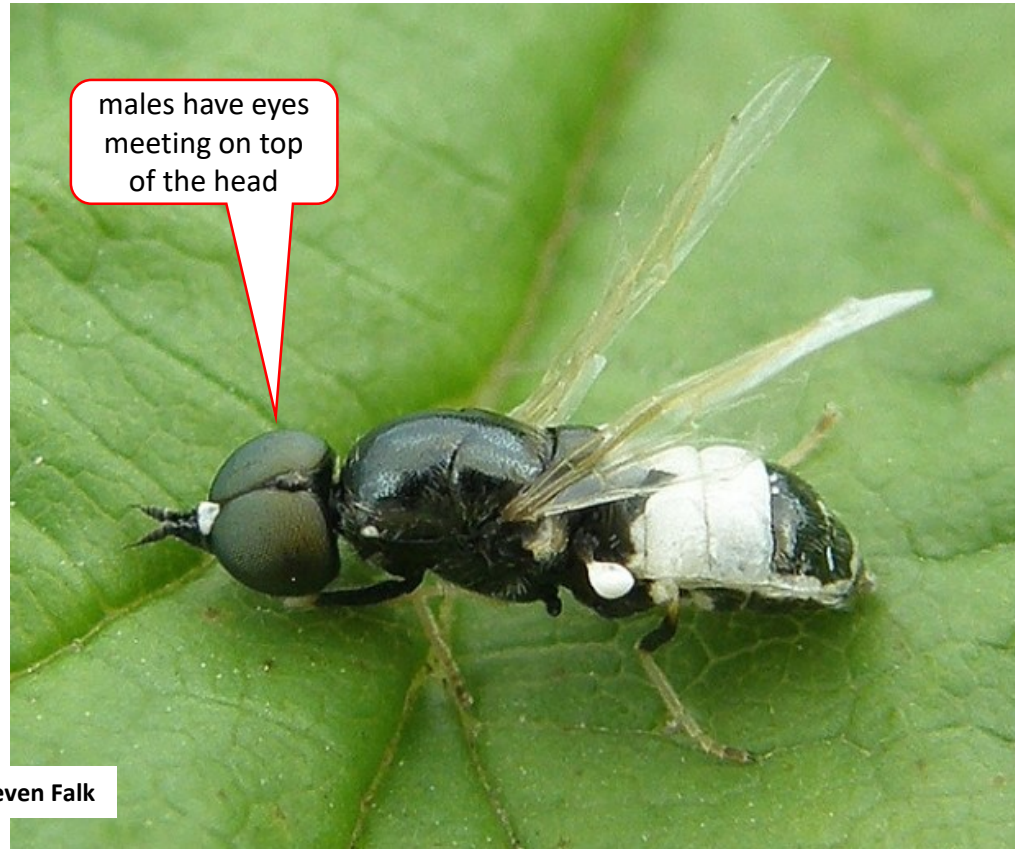


Recognising the genus: *Nemotelus*

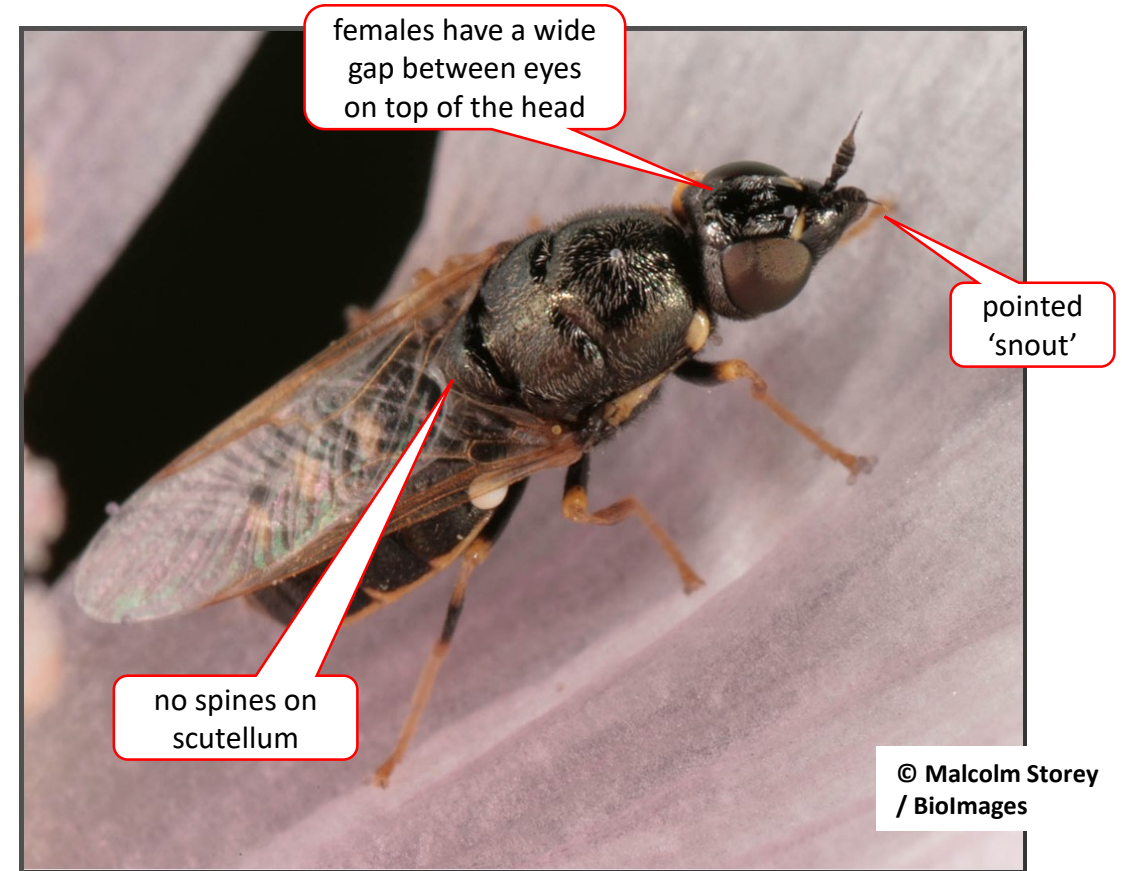
The genus *Nemotelus* contains four small species, all quite similar in shape, with distinctly pointed 'snouts'. The species have differing amounts of dark and pale markings, and subtle differences in the shape of the head. They are all between 3mm and 5.5mm long, with *N. nigrinus* at the smaller end of that range.

Males and females have differing identification features, so always check the eyes to see which sex you have.

All the species are fairly widespread in wetlands, but *N. notatus* and *N. uliginosus* are mostly restricted to the coast, although they can be found inland where conditions are suitable (e.g. where there are brine pits or other saline influences).



© Steven Falk



© Malcolm Storey / Biolimages

© Steven Falk



body entirely dark

[Steven Falk link](#)

Nematelus nigrinus (All-black Snout) - MALE

© Nigel Jones

[Nigel Jones link](#)

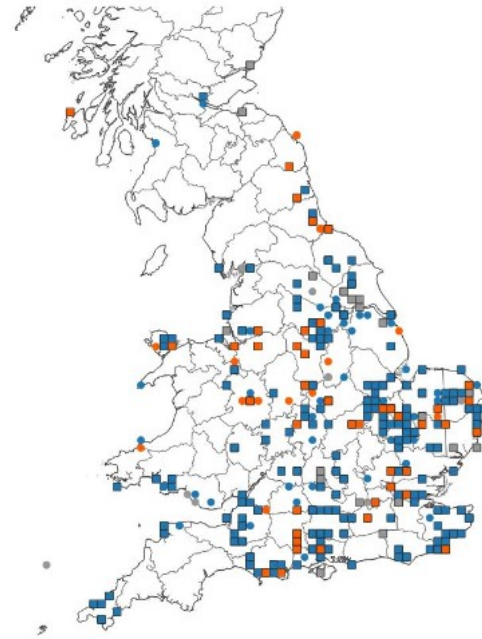


- ID difficulty: 3
- Flight period: May to Aug, peak late Jun to early Jul
- GB threat: Least Concern
- widespread in south, less so in north
- calcareous fens and marshy ground, coastal ditches and dune pools
- No. of records: 563 • % since 2000: 21%

© Steven Falk



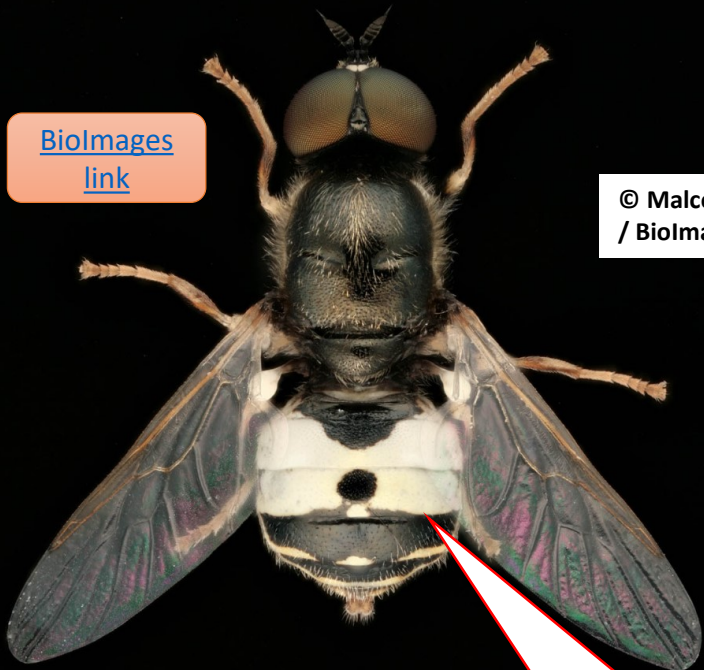
vein R4+5 **not** forked



[BioImages link](#)

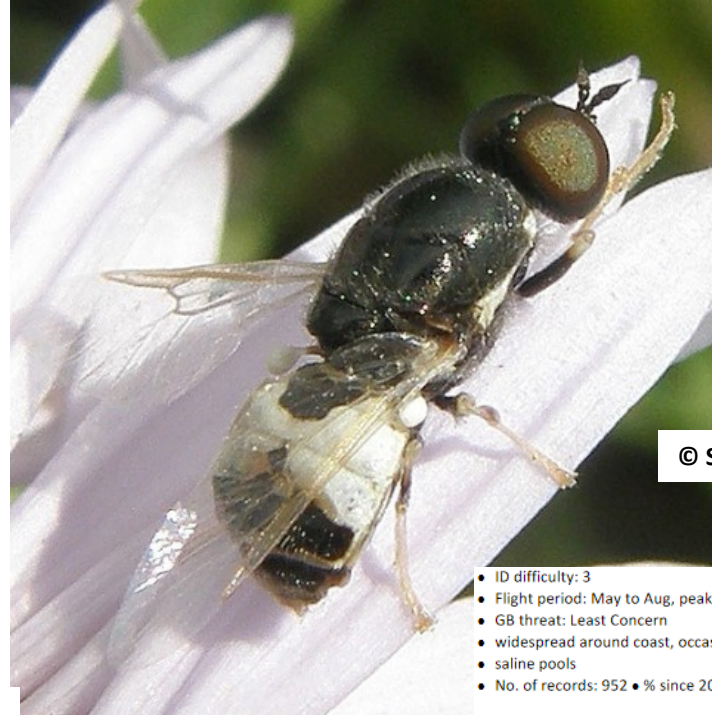
© Malcolm Storey / BioImages

profile flat across antennae



[Steven Falk link](#)

© Steven Falk

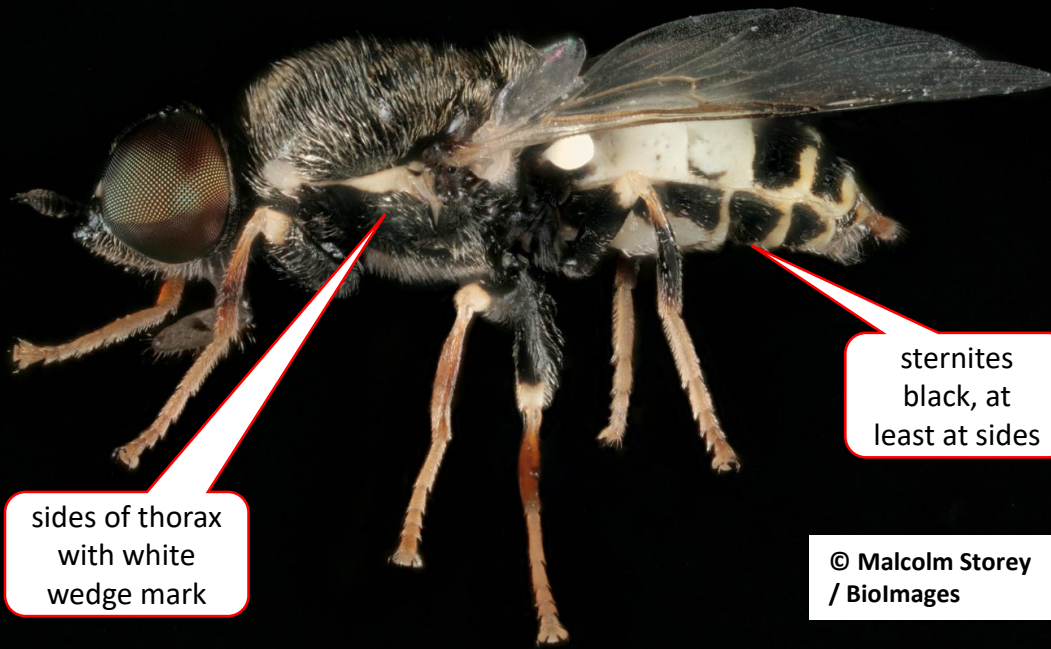
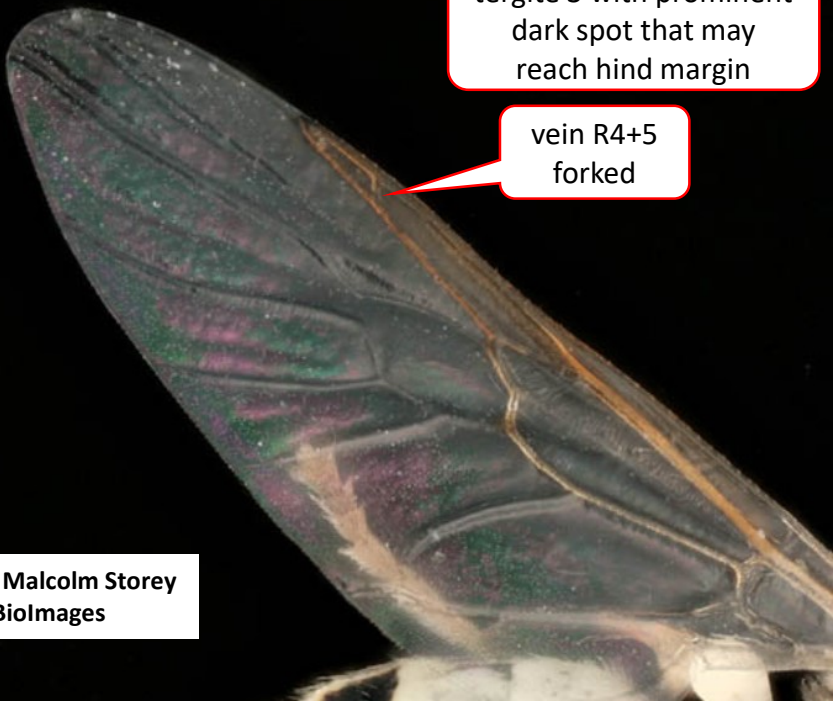


- ID difficulty: 3
- Flight period: May to Aug, peak in early Jul
- GB threat: Least Concern
- widespread around coast, occasional inland
- saline pools
- No. of records: 952 • % since 2000: 35%

Nemotelus notatus (Flecked Snout) - MALE

tergite 3 with prominent dark spot that may reach hind margin

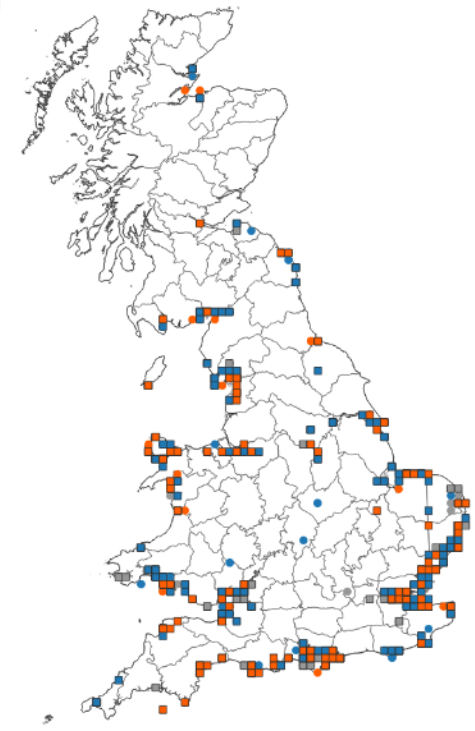
vein R4+5 forked



sides of thorax with white wedge mark

sternites black, at least at sides

© Malcolm Storey / BioImages



© Malcolm Storey / BioImages

sides of thorax nearly all black, often with narrow white line



© Steven Falk

[Steven Falk link](#)

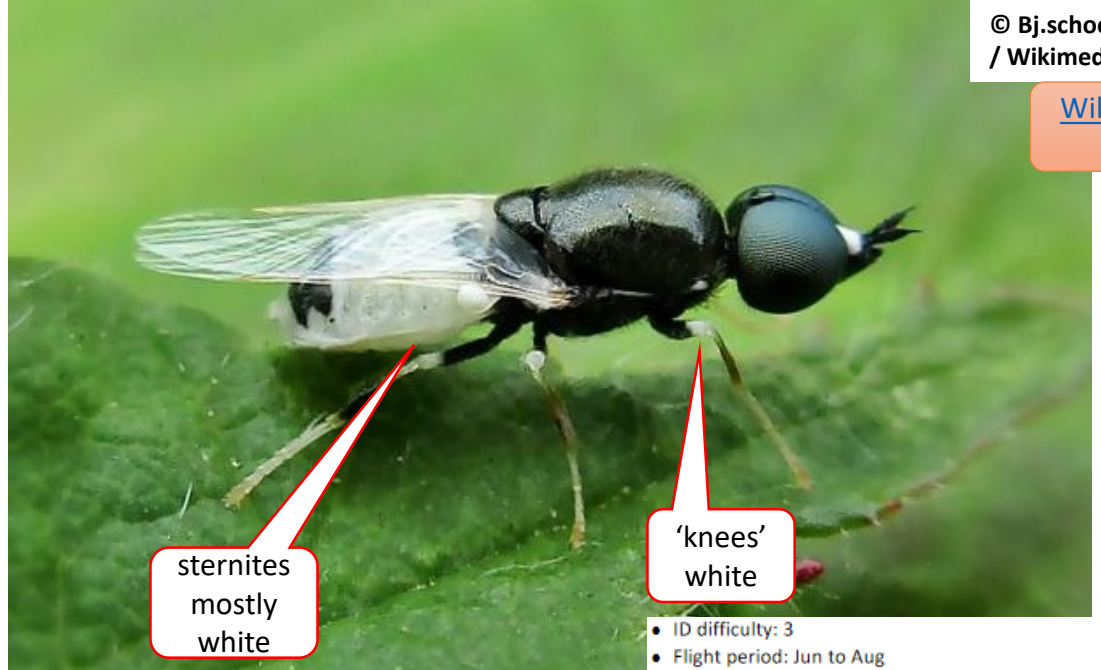
vein R4+5 forked



© Steven Falk

© Bj.schoenmakers / Wikimedia

[Wikimedia link](#)



sternites mostly white

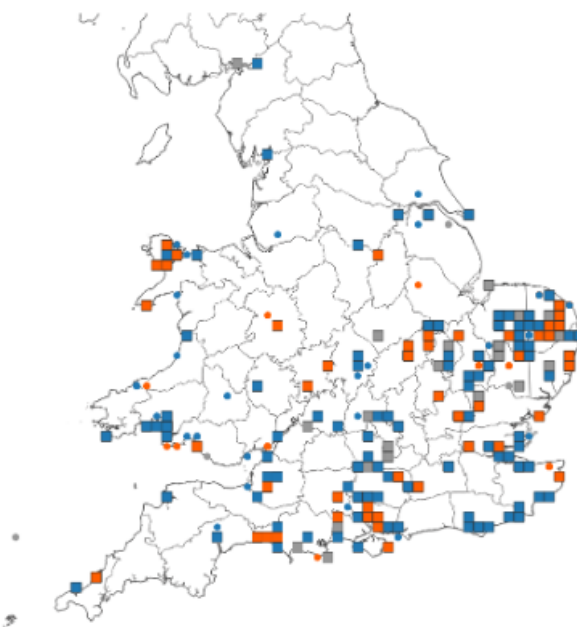
'knees' white

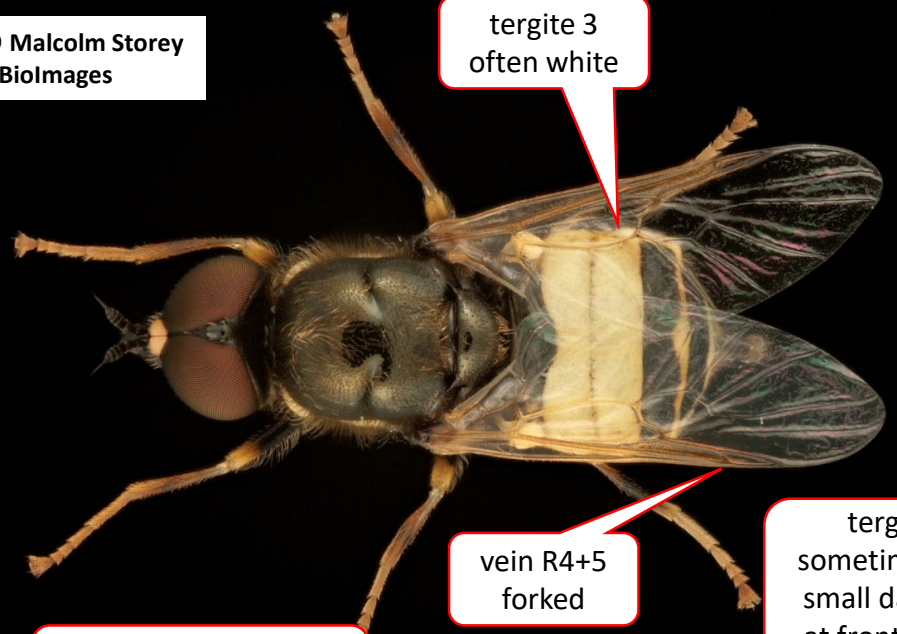
***Nemotelus pantherinus* (Fen Snout) - MALE**

- ID difficulty: 3
- Flight period: Jun to Aug
- GB threat: Least Concern
- widespread in south, scarcer in north
- seepages, including damp fen and meadows, ponds and ditches
- No. of records: 467 • % since 2000: 28%



© Steven Falk





tergite 3 often white

vein R4+5 forked

sides of thorax with white wedge mark

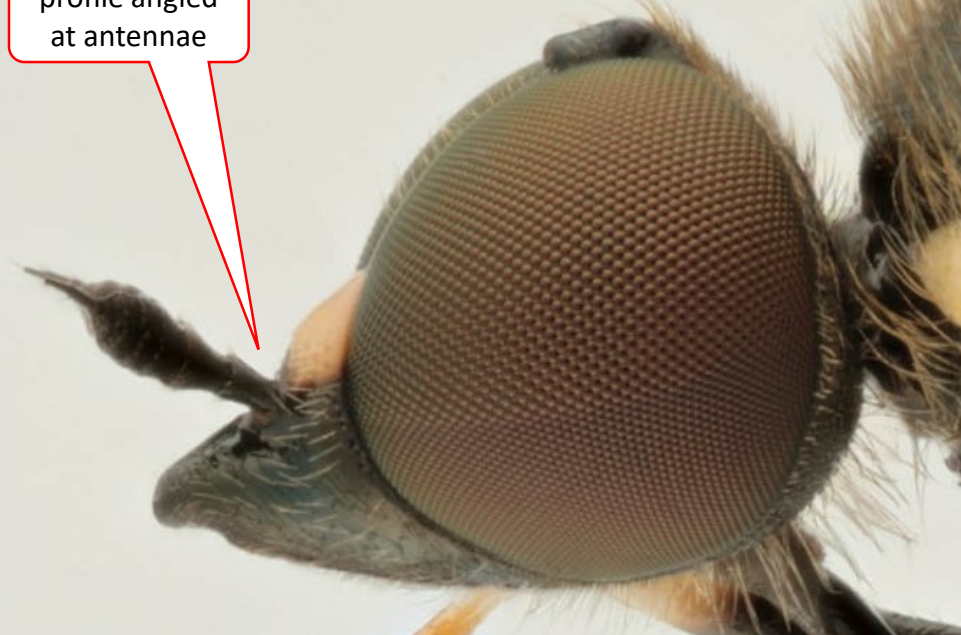


tergite 3 sometimes with small dark spot at front margin

[iRecord link](#)

© Tony Davis

profile angled at antennae



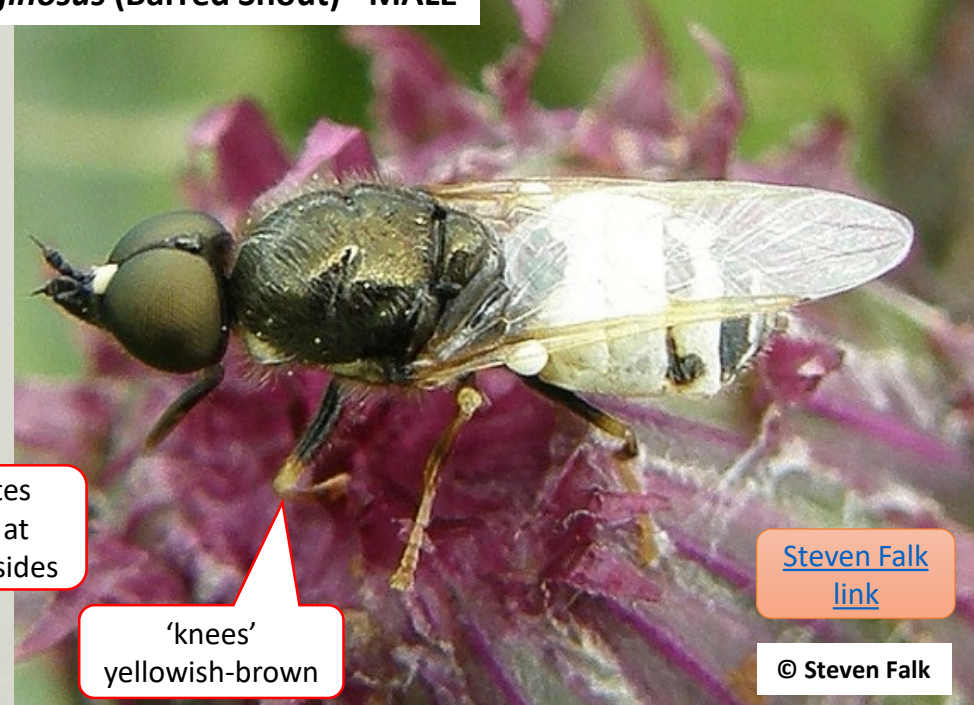
***Nemotelus uliginosus* (Barred Snout) - MALE**



[Biolimages link](#)

© Malcolm Storey / Biolimages

sternites black, at least at sides

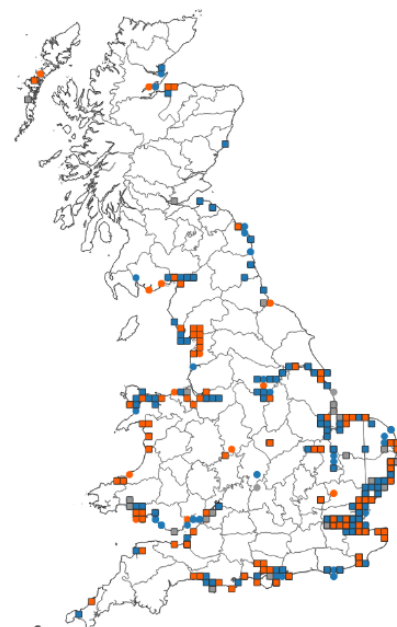


'knees' yellowish-brown

[Steven Falk link](#)

© Steven Falk

- ID difficulty: 3
- Flight period: Jun to early Sep, peak in Jul
- GB threat: Least Concern
- widespread around coast
- saline pools
- No. of records: 761 • % since 2000: 38%



© Steven Falk



[Steven Falk link](#)

body entirely dark



vein R4+5 not forked

© Steven Falk

Nemotelus nigrinus (All-black Snout) - FEMALE

© Janet Graham



[Janet Graham link](#)

© Malcolm Storey / Biolimages



[Biolimages link](#)

vein R4+5 forked

© Malcolm Storey / Biolimages



short, wedge-shaped white markings

[Steven Falk link](#)



© Steven Falk

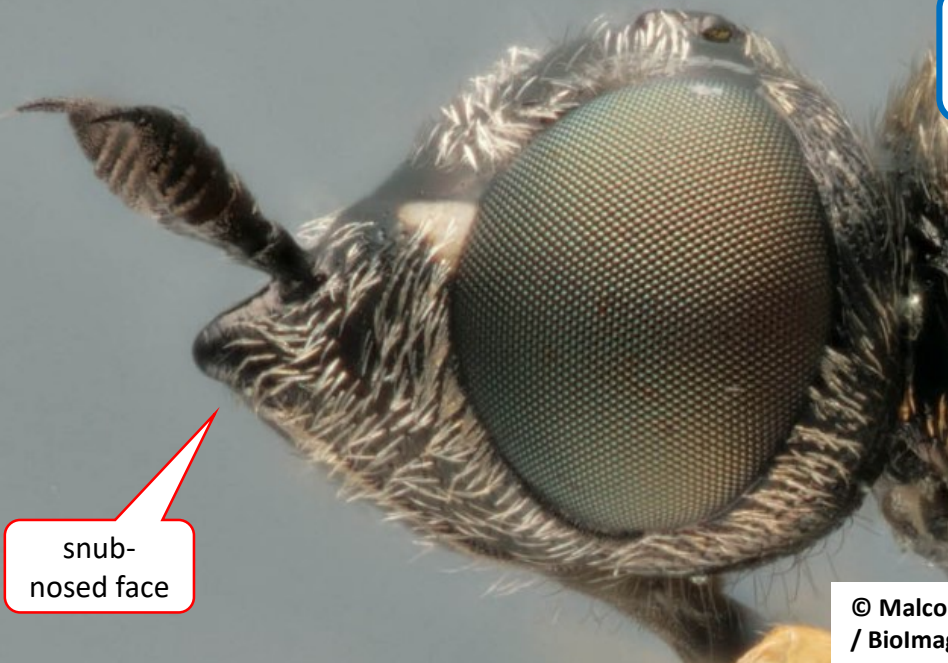
***Nemotelus notatus* (Flecked Snout) - FEMALE**

sides of thorax with white wedge mark



© Malcolm Storey / Biolimages

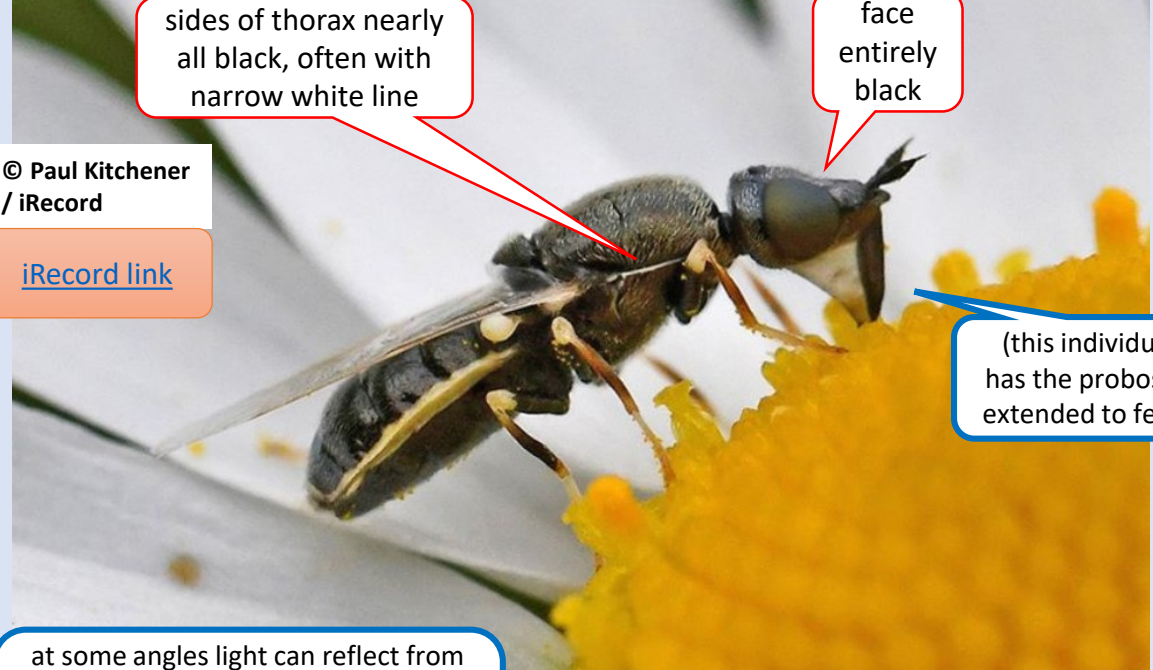
white line along edge of abdomen usually joins to pale hind margins of segments



snub-nosed face

© Malcolm Storey / Biolimages

See final page for comparison with *N. uliginosus*



sides of thorax nearly all black, often with narrow white line

face entirely black

(this individual has the proboscis extended to feed)

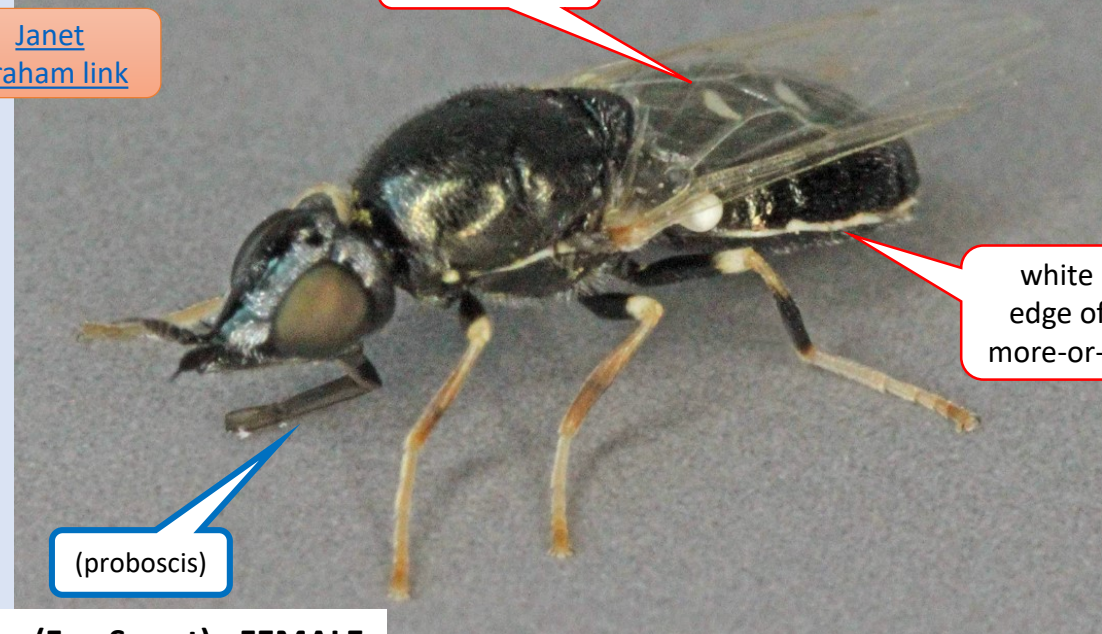
© Paul Kitchener / iRecord

[iRecord link](#)

at some angles light can reflect from the head and make it look as if it has spots, leading to confusion with other species, e.g. *N. uliginosus* – always check the other ID features as well

© Janet Graham

[Janet Graham link](#)



pale spots on abdomen

white line along edge of abdomen more-or-less straight

(proboscis)

***Nemotelus pantherinus* (Fen Snout) - FEMALE**



© Paul Kitchener / iRecord



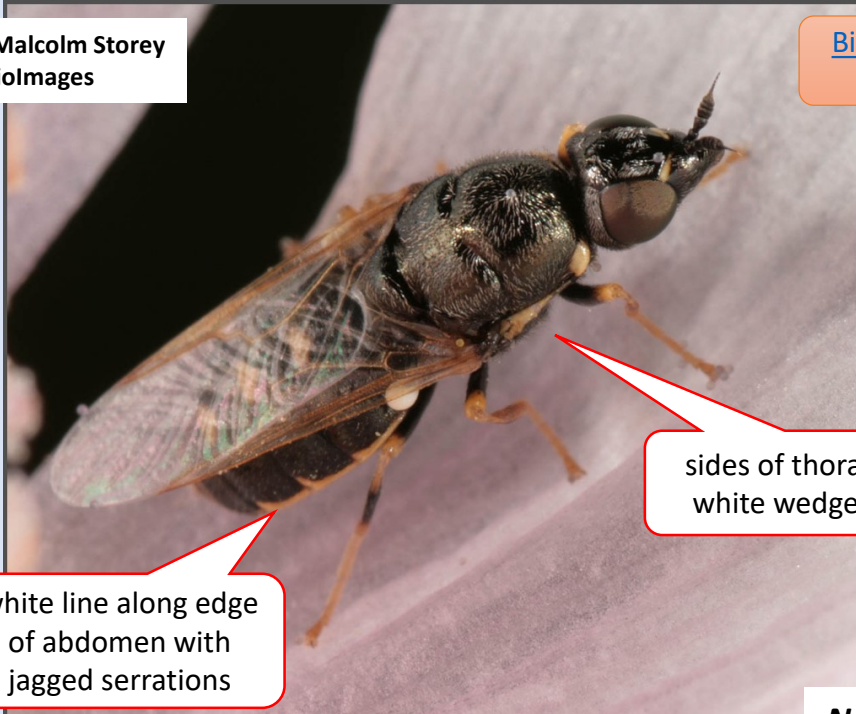
vein R4+5 forked

[Steven Falk link](#)

© Steven Falk

© Malcolm Storey / Biolmages

[Biolmages link](#)



sides of thorax with white wedge mark

white line along edge of abdomen with jagged serrations

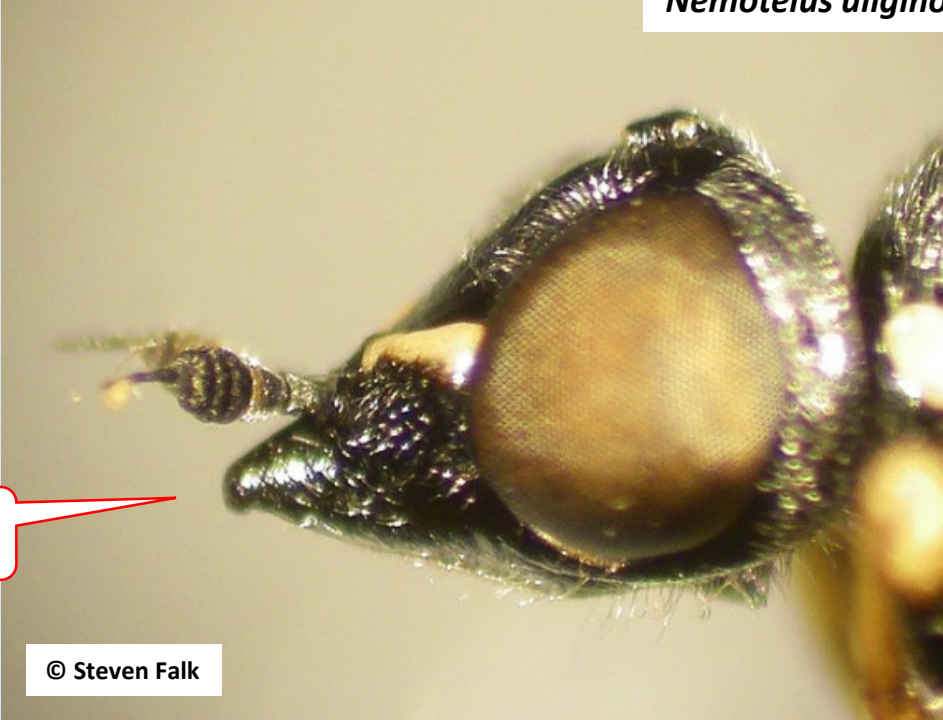
© Steven Falk



vein R4+5 forked

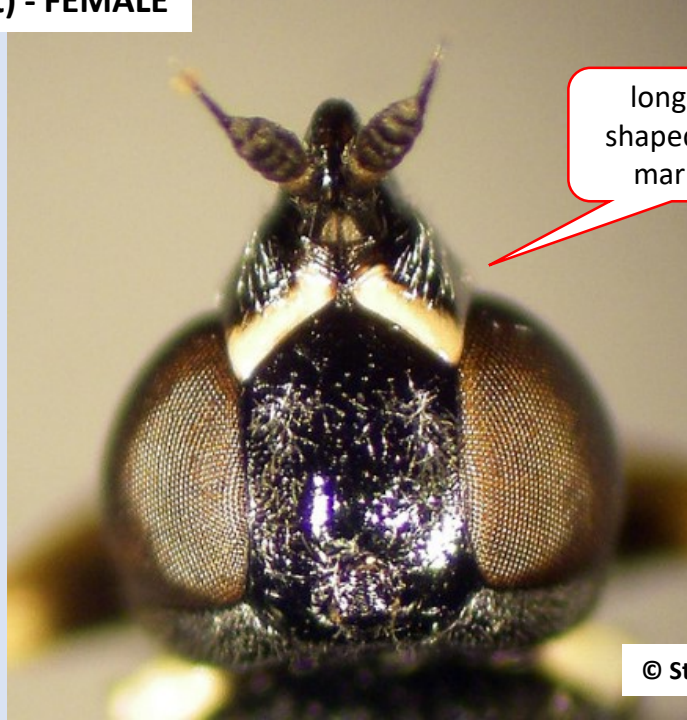
***Nemotelus uliginosus* (Barred Snout) - FEMALE**

[Steven Falk link](#)



face elongate

© Steven Falk



long, bar-shaped white markings

© Steven Falk

See next page for comparison with *N. notatus*

© Malcolm Storey / Biolimages



snub-nosed face

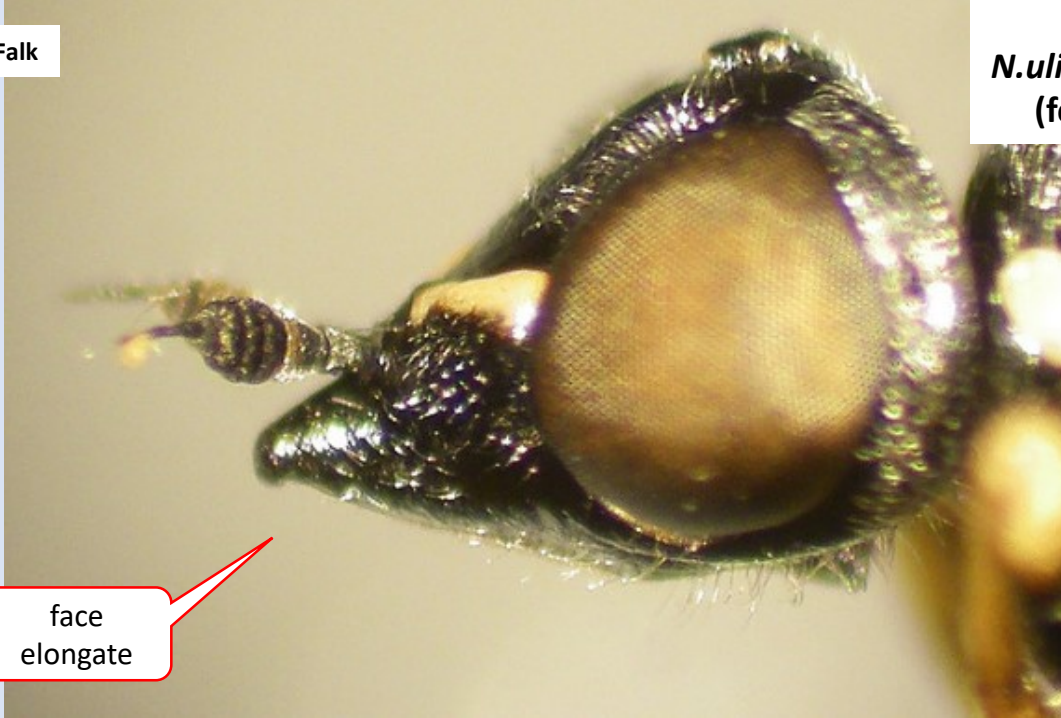


short, wedge-shaped white markings

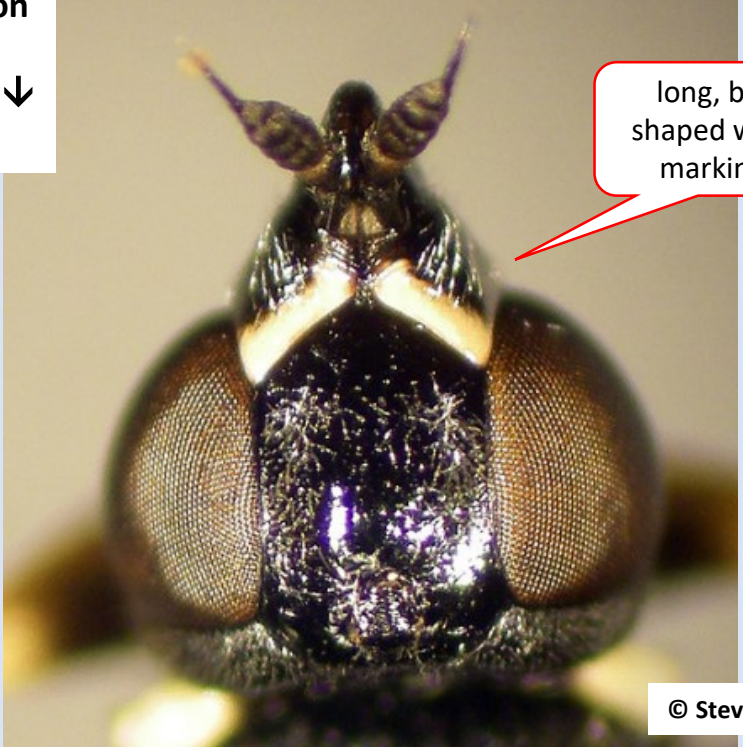
© Malcolm Storey / Biolimages

N. notatus ↑
in comparison
N. uliginosus ↓
(females)

© Steven Falk



face elongate



long, bar-shaped white markings

© Steven Falk